

Developmental Warm-up

The term "F# Embouchure" refers to the note that can be produced by the clarinet barrel and mouthpiece assembly when a focused sound is present. An unfocused sound on the barrel and mouthpiece assembly will sound much like a child's toy horn or "party favor". Using only the barrel and mouthpiece - without the complications of the entire instrument - allows students to concentrate on embouchure, air, and sound.

Play F# below on the barrel and mouthpiece only. Use a reference pitch tuner. Match pitch as closely as you can.



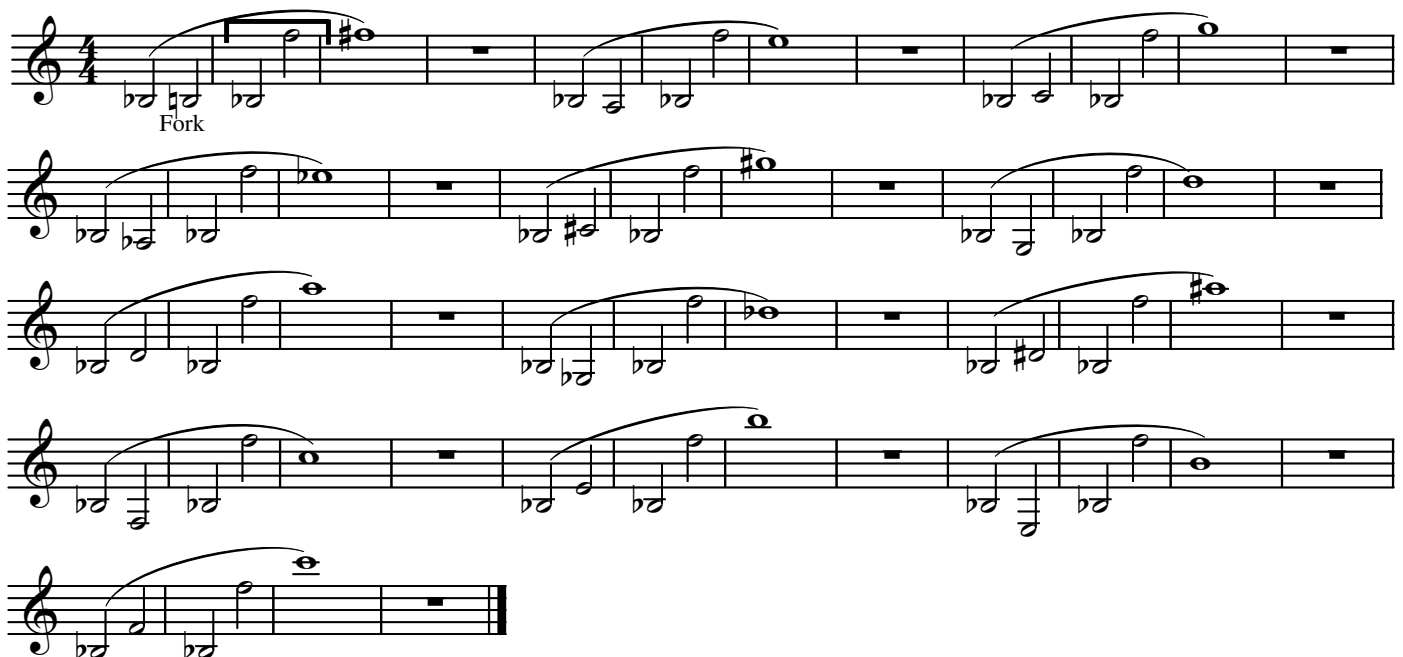
Play low B \flat on your instrument and then add the register key for F. Both notes should have the same focused tone quality. Do not let the clarion notes "pop" out. It is not necessary to change the breath support when changing registers.

To focus the sound, try the following:

- 1) Use plenty of air! Air is almost always an issue.
- 2) Think "hee" when you play. A high and forward tongue position will produce the best sound.
- 3) More Mouthpiece inside the mouth. Beginners who use too little mouthpiece will usually get no sound or a very flat sound. More experienced players who use too little mouthpiece may play sharp. Too much mouthpiece can cause squeaking.
- 4) Top teeth "grip" the top of the mouthpiece.
- 5) Firm Bottom Lip: Practice holding a drinking straw with only the lips (as if you are drinking a milkshake) while looking into a mirror. The shape produced - firm bottom lip; corners down, in, and snug - is very close to the correct shape of the clarinet embouchure.

12 beats in one breath. Do as many measures as you can, adding on until you can play all of the intervals. Keep tempo slow - 60 to 66. Slur everything!

Do not let the clarion notes "pop" out. They will not be helped by "blowing harder."



Extended Pattern

Musical notation for the Extended Pattern in 4/4 time, consisting of four staves of continuous eighth-note runs with slurs.

Interrupted Pattern -

as smooth and even as possible.

Musical notation for the Interrupted Pattern in 4/4 time, consisting of two staves of eighth-note runs with slurs and dashed lines indicating phrasing.

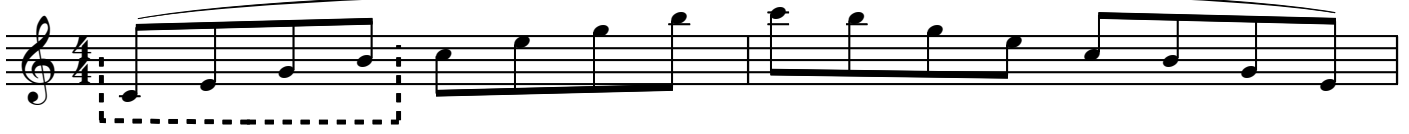
Thirds

Musical notation for Thirds in 4/4 time, consisting of two staves of eighth-note runs with slurs.

Tonguing will never improve unless you isolate and practice this skill specifically. **Daily Tonguing Practice** is one way to detect and correct errors as well as improve speed. Be aware of the following:

- 1) A focused sound is essential before tonguing can be addressed.
- 2) **Air is always an issue.** Most problems stem from lack of air support.
- 3) Try playing only on the barrel and mouthpiece (F#) when diagnosing tonguing problems. Errors are more apparent when variables are reduced.
- 4) Tip of the Tongue to the Top of the Reed
- 5) Speed is directly related to the distance of the tongue from the reed. Keep the tongue as close to the reed as possible to go faster.

Musical notation for Tonguing Practice in 2/4 time, consisting of two staves of eighth-note runs with slurs.



Major 7 Chord: 1st, 3rd, 5th, and 7th notes of the scale.



Dominant 7 Chord: the 7th note is lowered by a half-step from the major scale.



minor 7 chord: the 3rd and 7th notes are lowered one half-step from the major scale.



Half Diminished chord: The 3rd, 5th, and 7th notes are all lowered one half step from the major scale.



Fully Diminished Chord: The 3rd and 5th notes are lowered one half step, and the 7th note is lowered a whole step from the major scale.

Relative Minor Scales

Natural Minor: Nothing is changed. Think of this scale as exactly like the relative Major scale. The only difference is that the minor scale starts on a different note - 3 half-steps below the starting note of the Major scale.



Harmonic Minor: The 7th note of the scale is raised 1 half-step going up and coming down.



Melodic Minor: The 6th and 7th note of the scale are raised going up. On the way down, these notes return to the "original" key signature.

